

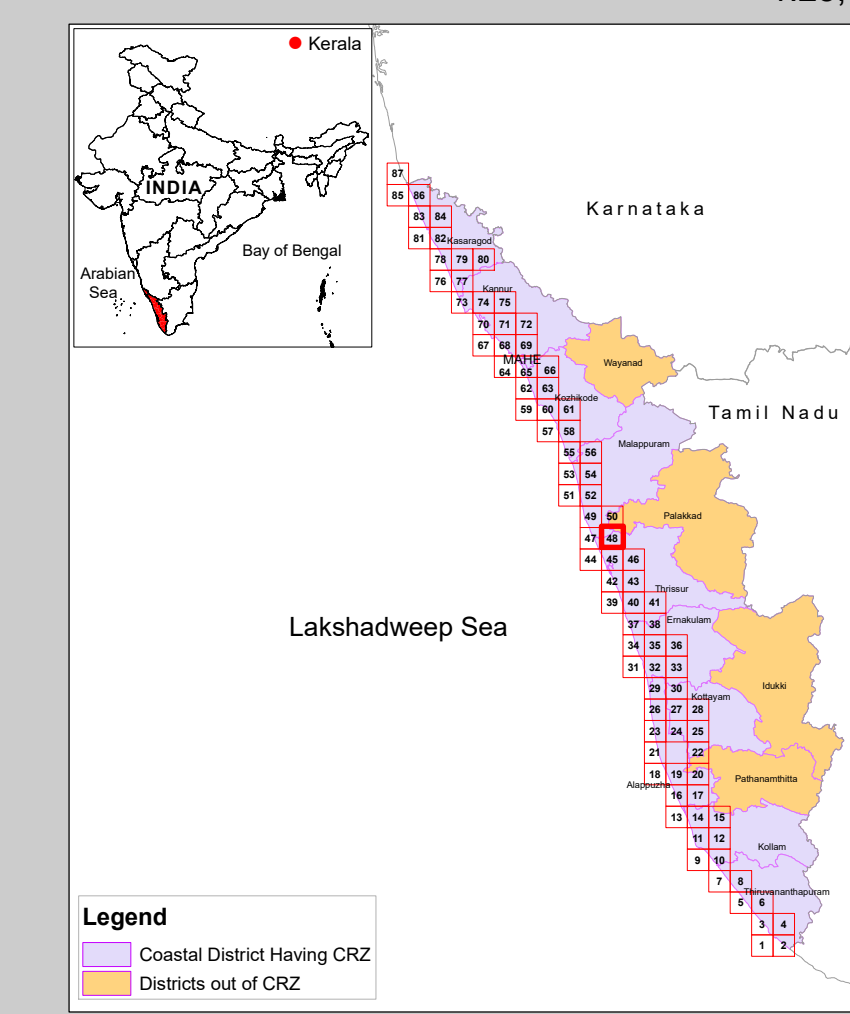
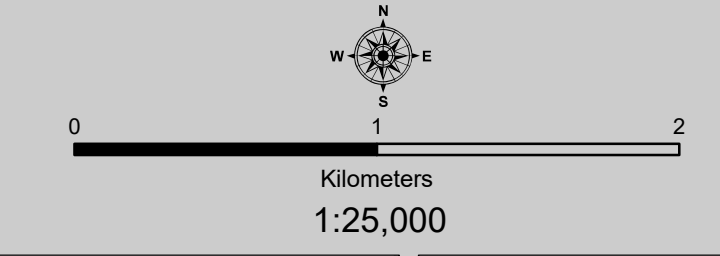
D R A F T M A P

### COASTAL ZONE MANAGEMENT PLAN KERALA

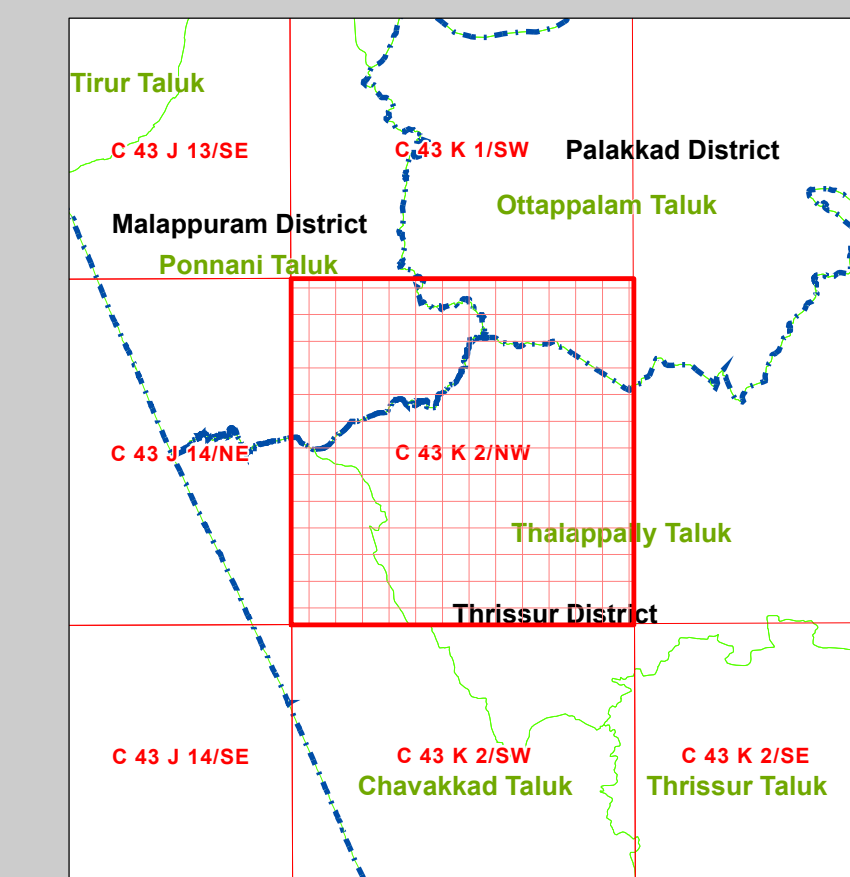
Sheet No: C 43 K 2/NW

Projection :- UTM Datum :- WGS 1984

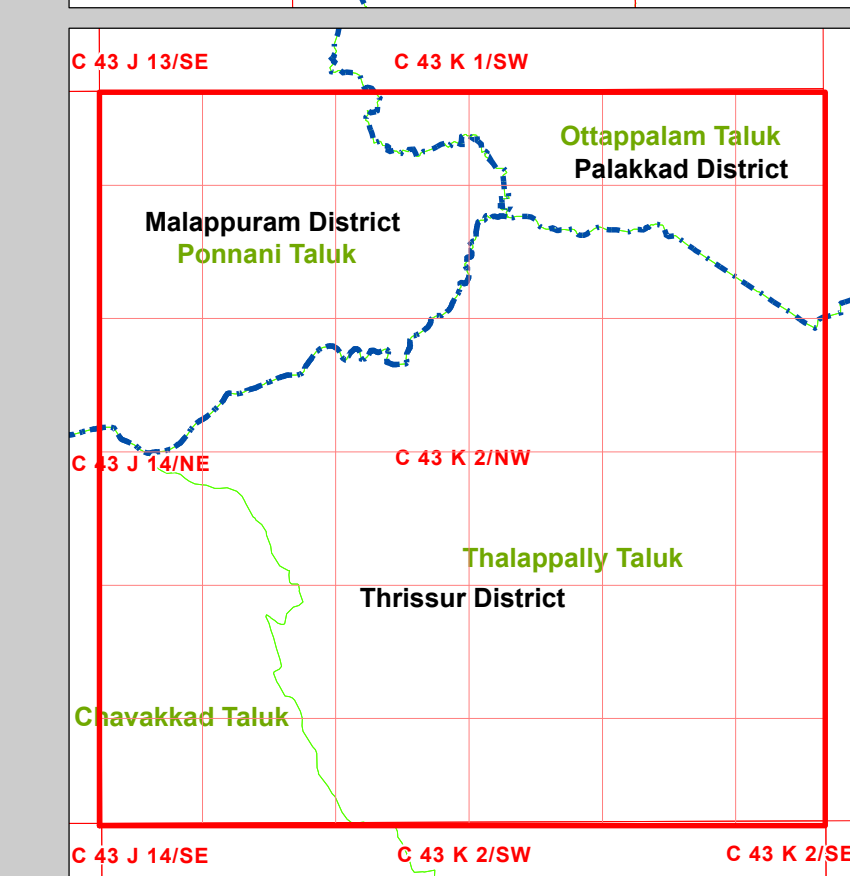
Map No. : KL 48



- LEGEND**
- Light house
  - Fish Landing Centre
  - Fishing Harbour
  - Port
  - Sluice Gate - Prior to 1991
  - Road
  - Bridge
  - Railway Line
  - Bund - Prior to 1991
  - Seawall
  - Village Boundary
  - Panchayat Boundary
  - Municipal or Corporation Boundary
  - Taluk Boundary
  - District Boundary
  - Port Limit
  - Survey Plots
  - Pier
  - Groins
  - Jetty/Breakwater
  - Community Reserve
  - CVCA Boundary
  - Waterbody



- CRZ CATEGORY**
- CRZ - I**
- Archaeological/Heritage Sites - CRZ I A
  - Turtle Nesting Grounds- CRZ I A
  - Mangroves - CRZ I A
  - 50m Mangrove Bufferzone - CRZ I A
  - Inter Tidal Zone - CRZ I B
- CRZ - II**
- CRZ II
- CRZ - III**
- No Development Zone - NDZ
  - 50 to 500m from HTL - CRZ III A
  - 200 to 500m from HTL - CRZ III B
- CRZ - IV**
- Waterbody - CRZ IVA
  - Waterbody - CRZ IVB



- DATA SOURCE**
- I) National Centre for Sustainable Coastal Management
  - 1) HTL, 2) CRZ-IA, 3) CVCA
  - II) Survey of India
  - 1) Hazard Line
  - III) Survey and Land Records, Govt of Kerala
  - 1) Administrative Boundaries
  - IV) Department of Environment, Govt of Kerala
  - 1) Bund/Sluice gate prior to 1991
  - V) Department of Fisheries, Govt of Kerala
  - 1) Integrated Fisheries Management Plan for CZMP, Kerala
  - VI) Department of Tourism, Govt of Kerala
  - 1) Tourism Management Plan
  - VII) National Centre for Earth Science Studies
  - 1) CRZ categories and lines
  - 2) Infrastructure facilities - light house, Road, Railway Lines, Seawall, Breakwater, Jetty etc.

**NOTE:**

1. Mangroves in private land will not require a buffer zone.
2. Islands : 20m CRZ Line from HTL is valid only after the approval of IIMP of the particular Island.

**ABBREVIATIONS**

CRZ - Coastal Regulation Zone  
 CVCA : Critically Vulnerable Coastal Areas  
 IIMP : Integrated Island Management Plan

Mapped During 2023

**PREPARED AS PER COASTAL REGULATION ZONE NOTIFICATION 2019**

Scrutinized by	Certified by	Concurred by	Approved by
D	R	A	F
T	M	A	P

Prepared by  
  
**National Centre for Earth Science Studies**  
 Ministry of Earth Sciences, Government of India, Thiruvananthapuram - 695 011

Prepared for  
  
**Department of Environment, Government of Kerala**