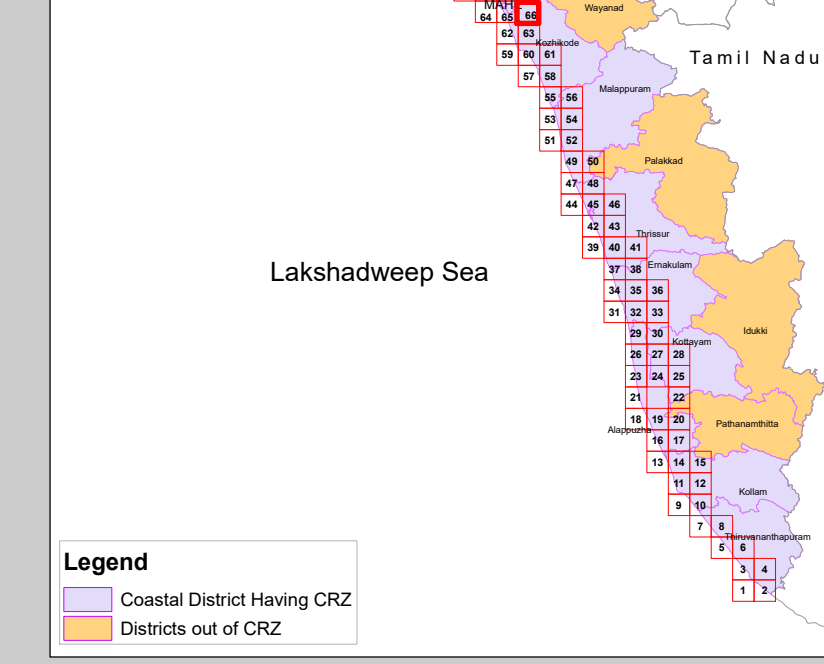
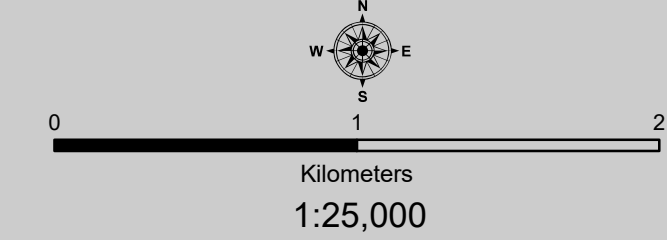


**COASTAL ZONE MANAGEMENT PLAN
KERALA**

Sheet No: C 43 D 10/NE

Projection :- UTM Datum :- WGS 1984

Map No. : KL 66



LEGEND

- Light house
- Fish Landing Centre
- Fishing Harbour
- Port
- Sluice Gate - Prior to 1991
- Road
- Bridge
- Railway Line
- Bund - Prior to 1991
- Seawall
- Village Boundary
- Panchayat Boundary
- Municipal or Corporation Boundary
- Taluk Boundary
- District Boundary
- Port Limit
- Survey Plots
- Pier
- Groins
- Jetty/Breakwater
- Community Reserve
- CVCA Boundary
- Waterbody

CRZ Lines

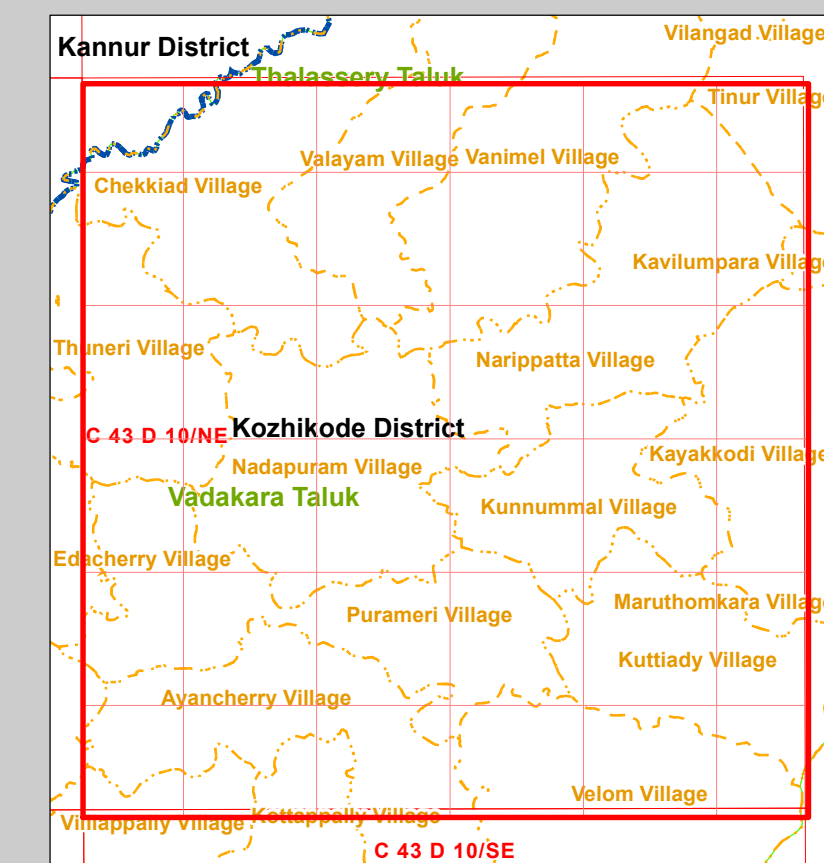
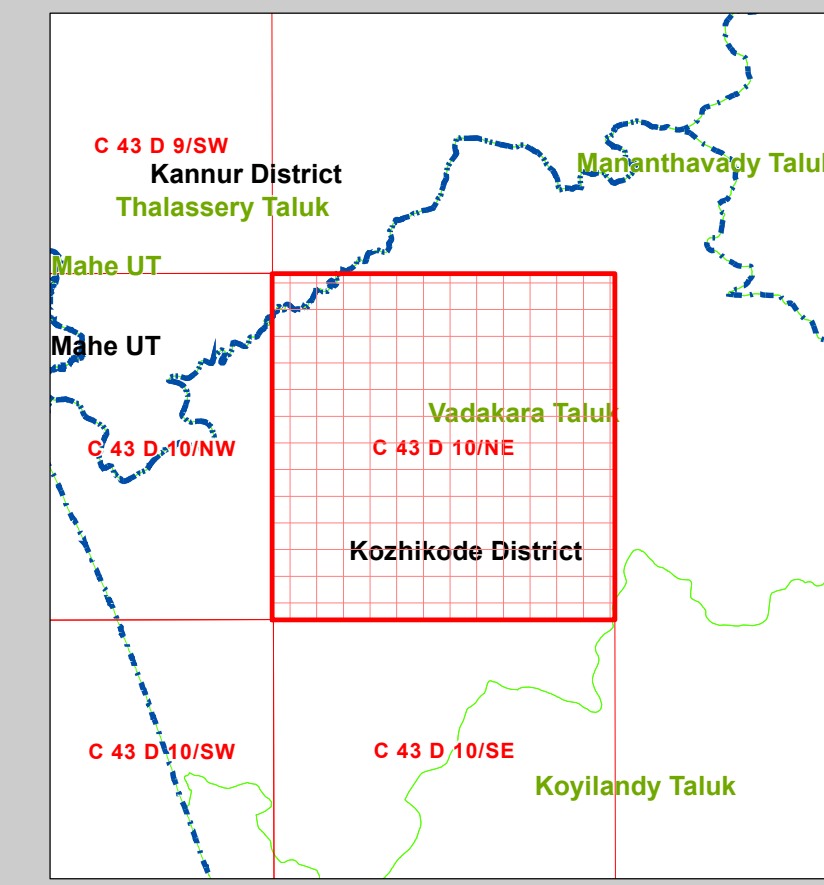
- High Tide Line (HTL)
- Low Tide Line (LTL)
- CRZ Line for River/Creek
- 20m CRZ Line for Islands
- 50m CRZ Line - CRZ IIIA
- 200m CRZ Line - CRZ IIIB
- 500m CRZ Line
- Hazard Line

CRZ CATEGORY

- CRZ - I**
 - Archaeological/Heritage Sites - CRZ I A
 - Turtle Nesting Grounds- CRZ I A
 - Mangroves - CRZ I A
 - 50m Mangrove Bufferzone - CRZ I A
 - Inter Tidal Zone - CRZ I B
- CRZ - II**
- CRZ - III**
 - No Development Zone - NDZ
 - 50 to 500m from HTL - CRZ III A
 - 200 to 500m from HTL - CRZ III B
- CRZ - IV**
 - Waterbody - CRZ IVA
 - Waterbody - CRZ IVB

DATA SOURCE

- National Centre for Sustainable Coastal Management
- HTL, 2) CRZ-IA, 3) CVCA
- Survey of India
- Hazard Line
- Survey and Land Records, Govt of Kerala
- Administrative Boundaries
- Department of Environment, Govt of Kerala
- Department of Fisheries, Govt of Kerala
- Bund/Sluice gate prior to 1991
- Department of Fisheries, Govt of Kerala
- Integrated Fisheries Management Plan for CZMP, Kerala
- Department of Tourism, Govt of Kerala
- Tourism Management Plan
- National Centre for Earth Science Studies
- CRZ categories and lines
- Infrastructure facilities - light house, Road, Railway Lines, Seawall, Breakwater, Jetty etc.



NOTE:

- Mangroves in private land will not require a buffer zone.
- Islands : 20m CRZ Line from HTL is valid only after the approval of IIMP of the particular Island.

ABBREVIATIONS

CRZ : Coastal Regulation Zone
CVCA : Critically Vulnerable Coastal Areas
IIMP : Integrated Island Management Plan

Mapped During 2023

PREPARED AS PER COASTAL REGULATION ZONE NOTIFICATION 2019

Scrutinized by	Certified by	Concurred by	Approved by
----------------	--------------	--------------	-------------

D R A F T M A P

Prepared by

National Centre for Earth Science Studies
 Ministry of Earth Sciences, Government of India, Thiruvananthapuram - 695 011

Prepared for

Department of Environment, Government of Kerala

