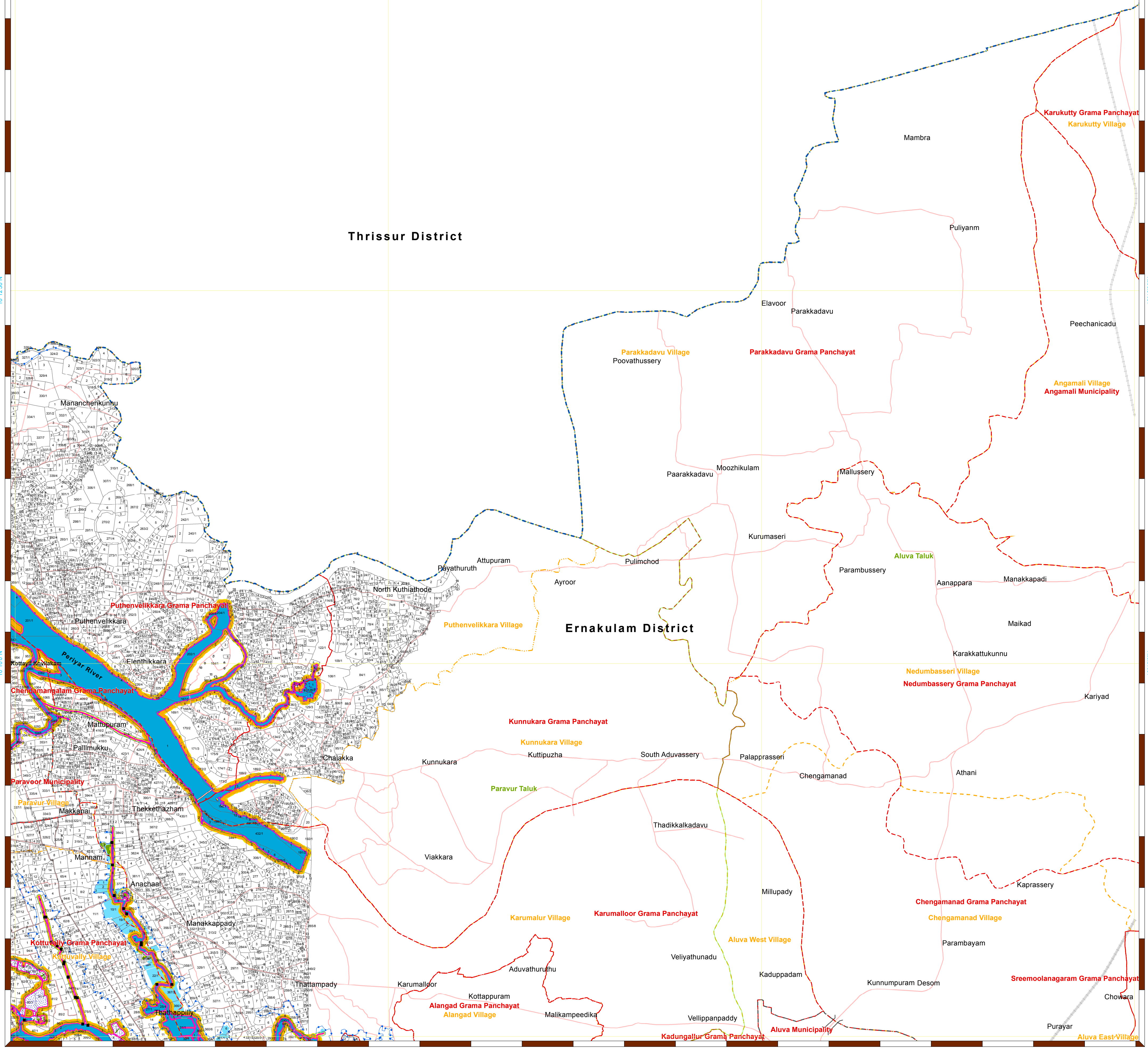


76°15'0"E 76°17'30"E 76°20'0"E 76°22'30"E

D R A F T M A P

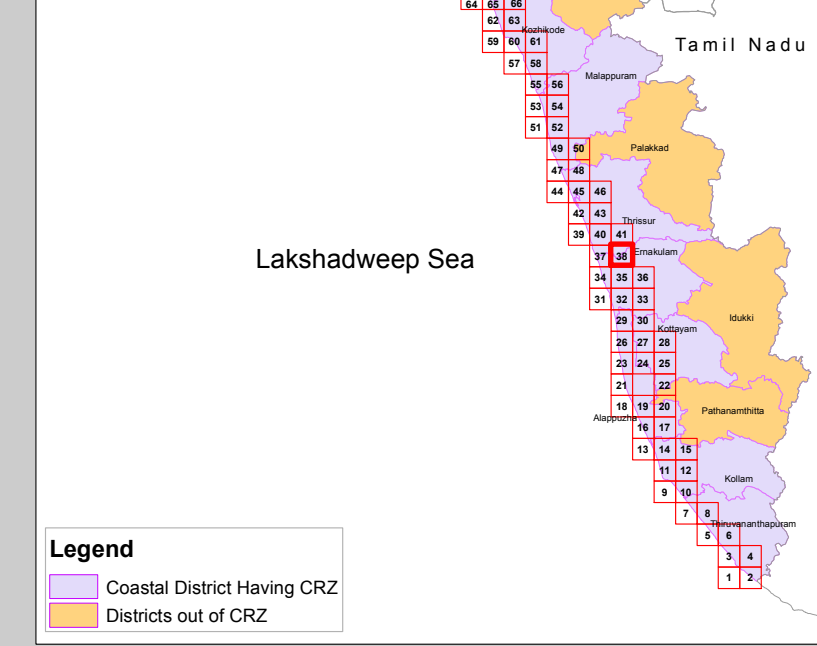
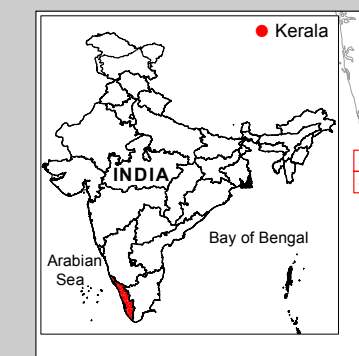
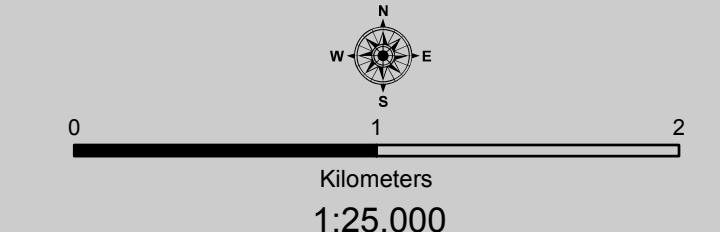


COASTAL ZONE MANAGEMENT PLAN KERALA

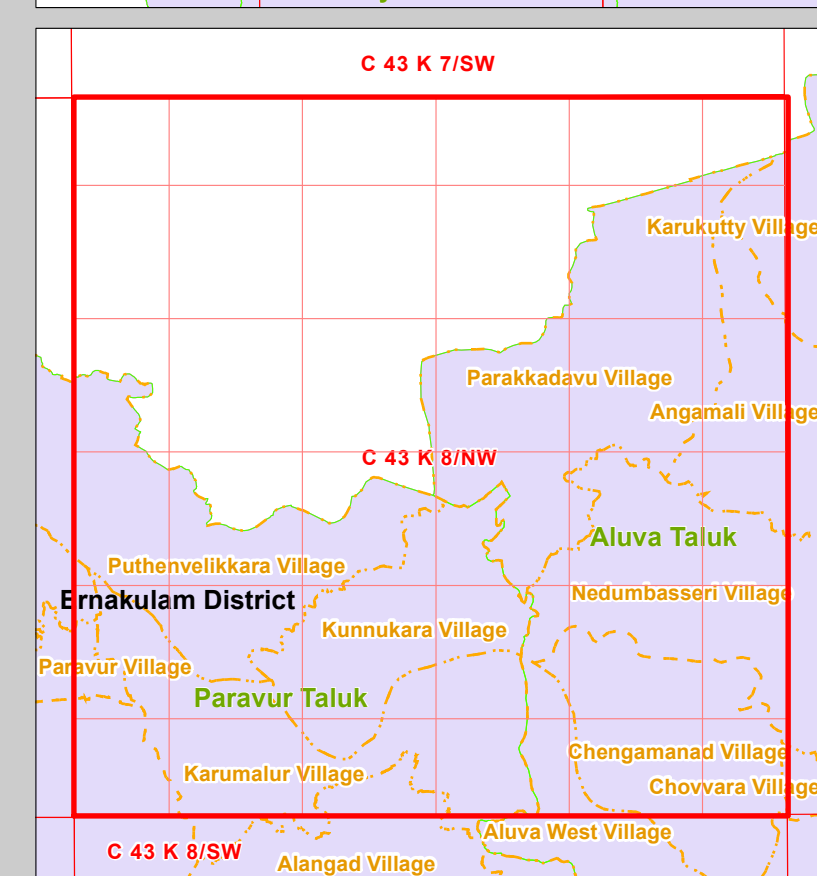
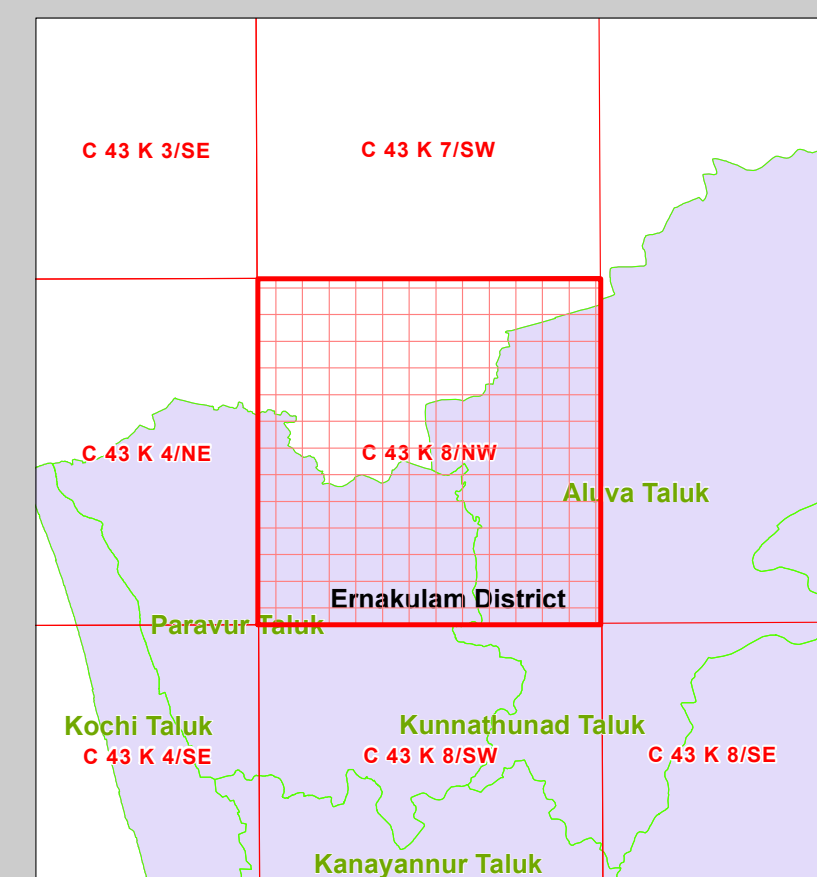
Sheet No: C 43 K 8/NW

Projection :- UTM Datum :- WGS 1984

Map No. : KL 38



- LEGEND**
- Light house
 - Fish Landing Centre
 - Fishing Harbour
 - Port
 - Sluice Gate - Prior to 1991
 - Road
 - Bridge
 - Railway Line
 - Bund - Prior to 1991
 - Seawall
 - Village Boundary
 - Panchayat Boundary
 - Municipal or Corporation Boundary
 - Taluk Boundary
 - District Boundary
 - Port Limit
 - Survey Plots
 - Pier
 - Groins
 - Jetty/Breakwater
 - Community Reserve
 - CVCA Boundary
 - Waterbody
- CRZ Lines**
- High Tide Line (HTL)
 - Low Tide Line (LTL)
 - CRZ Line for River/Creek
 - 20m CRZ Line for Islands
 - 50m CRZ Line - CRZ IIIA
 - 200m CRZ Line - CRZ IIIB
 - 500m CRZ Line
 - Hazard Line
- CRZ - I**
- Archaeological/Heritage Sites - CRZ I A
 - Turtle Nesting Grounds - CRZ I A
 - Mangroves - CRZ I A
 - 50m Mangrove Bufferzone - CRZ I A
 - Inter Tidal Zone - CRZ I B
- CRZ - II**
- CRZ II
- CRZ - III**
- No Development Zone - NDZ
 - 50 to 500m from HTL - CRZ III A
 - 200 to 500m from HTL - CRZ III B
- CRZ - IV**
- Waterbody - CRZ IVA
 - Waterbody - CRZ IVB



- DATA SOURCE**
- (I) National Centre for Sustainable Coastal Management
 - (1) HTL, 2) CRZ-IA, 3) CVCA
 - (II) Survey of India
 - (1) Hazard Line
 - (III) Survey and Land Records, Govt of Kerala
 - (IV) Administrative Boundaries
 - (V) Department of Environment, Govt of Kerala
 - (1) Bund/Sluice gate prior to 1991
 - (VI) Department of Fisheries, Govt of Kerala
 - (1) Integrated Fisheries Management Plan for CZMP, Kerala
 - (VII) Department of Tourism, Govt of Kerala
 - (1) Tourism Management Plan
 - (VIII) National Centre for Earth Science Studies
 - (1) CRZ categories and lines
 - (2) Infrastructure facilities - light house, Road, Railway Lines, Seawall, Breakwater, Jetty etc.

NOTE:

1. Mangroves in private land will not require a buffer zone.
2. Islands ; 20m CRZ Line from HTL is valid only after the approval of IIMP of the particular Island.

ABBREVIATIONS

CRZ - Coastal Regulation Zone
 CVCA : Critically Vulnerable Coastal Areas
 IIMP : Integrated Island Management Plan

Mapped During 2023

PREPARED AS PER COASTAL REGULATION ZONE NOTIFICATION 2019

Scrutinized by	Certified by	Concurred by	Approved by

D R A F T M A P

Prepared by

National Centre for Earth Science Studies
 Ministry of Earth Sciences, Government of India, Thiruvananthapuram - 695 011

Prepared for

Department of Environment, Government of Kerala

76°15'0"E 76°17'30"E 76°20'0"E 76°22'30"E